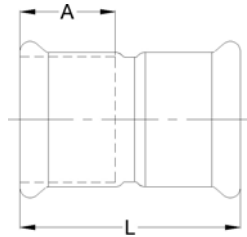


C Pressfittings Press fitting

Pressfittings aus Edelstahl mit Dichtringen aus EPDM. Werkstoff AISI 316 / AISI 316 L
Stainless steel press fittings with EPDM gaskets. Material AISI 316 / AISI 316 L

Muffe Coupling



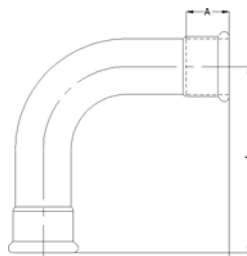
AD / OD	A (mm)	L (mm)	kg
15,0	20,0	56,0	0,04
18,0	21,0	55,0	0,05
22,0	22,0	51,0	0,06
28,0	24,0	56,0	0,07
35,0	27,0	68,0	0,10
42,0	32,0	74,0	0,14
54,0	38,0	94,0	0,21
76,1	55,0	144,0	0,60
88,9	64,0	158,0	0,80
108,0	79,0	184,0	1,25

Schiebemuffe / Langmuffe Slip coupling



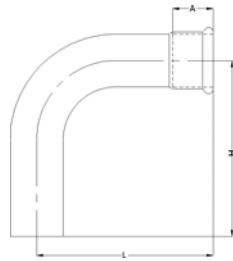
AD / OD	A (mm)	L (mm)	kg
15,0	20,0	80,0	0,06
18,0	21,0	80,0	0,07
22,0	22,0	84,0	0,08
28,0	24,0	90,0	0,11
35,0	27,0	102,0	0,16
42,0	32,0	120,0	0,23
54,0	38,0	139,0	0,31
76,1	55,0	226,0	1,00
88,9	64,0	255,0	1,32
108,0	79,0	304,0	2,22

Bogen 90° - R=1,5D Elbow 90° - R=1,5D



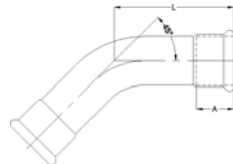
AD / OD	A (mm)	L (mm)	kg
15,0	20,0	49,0	0,06
18,0	21,0	53,0	0,07
22,0	22,0	63,0	0,09
28,0	24,0	72,0	0,14
35,0	27,0	121,0	0,29
42,0	32,0	155,0	0,45
54,0	38,0	165,0	0,49
76,1	55,0	233,0	1,33
88,9	64,0	278,0	1,88
108,0	79,0	333,0	2,76

Bogen 90° mit einseitigen Einschiebende - R=1,5D
Elbow 90° with one plain end - R=1,5D



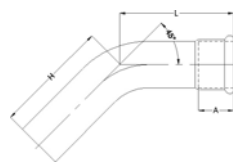
AD / OD	A (mm)	H (mm)	L (mm)	kg
15,0	20,0	58,0	49,0	0,06
18,0	21,0	62,0	53,0	0,07
22,0	22,0	70,0	63,0	0,09
28,0	24,0	79,0	72,0	0,15
35,0	27,0	127,0	121,0	0,28
42,0	32,0	161,0	155,0	0,45
54,0	38,0	173,0	165,0	0,60
76,1	55,0	246,0	233,0	1,60
88,9	64,0	292,0	278,0	2,15
108,0	79,0	350,0	333,0	3,25

Bogen 45° - R=1,5D
Elbow 45° - R=1,5D



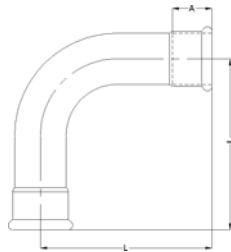
AD / OD	A (mm)	L (mm)	kg
15,0	20,0	35,0	0,05
18,0	21,0	36,0	0,06
22,0	22,0	41,0	0,08
28,0	24,0	47,0	0,12
35,0	27,0	71,0	0,20
42,0	32,0	88,0	0,31
54,0	38,0	115,0	0,50
76,1	55,0	190,0	1,35
88,9	64,0	211,0	1,90
108,0	79,0	247,0	2,80

Bogen 45° mit einseitigen Einschiebende - R=1,5D
Elbow 45° with one plain end - R=1,5D



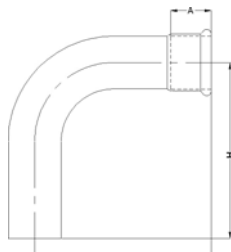
AD / OD	A (mm)	H (mm)	L (mm)	kg
15,0	20,0	45,0	35,0	0,05
18,0	21,0	46,0	36,0	0,06
22,0	22,0	48,0	41,0	0,08
28,0	24,0	54,0	47,0	0,12
35,0	27,0	77,0	71,0	0,20
42,0	32,0	96,0	88,0	0,30
54,0	38,0	123,0	115,0	0,50
76,1	55,0	195,0	190,0	1,40
88,9	64,0	225,0	211,0	1,85
108,0	79,0	266,0	247,0	2,75

Winkel 90° - R=1D
Short elbow 90° - R=1D



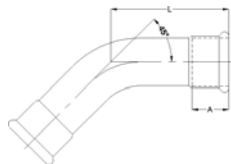
AD / OD	A (mm)	L (mm)	kg
35,0	27,0	67,0	0,22
42,0	42,0	78,0	0,33
54,0	38,0	100,0	0,50
76,1	55,0	147,0	1,20
88,9	64,0	170,0	1,70
108,0	79,0	206,0	2,65

Winkel 90° mit einseitigen Einschiebende - R=1D
Short elbow 90° with one plain end - R=1D



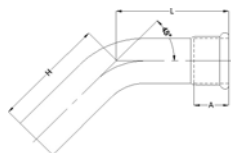
AD / OD	A (mm)	H (mm)	L (mm)	kg
35,0	27,0	73,0	67,0	0,21
42,0	32,0	85,0	78,0	0,32
54,0	38,0	108,0	100,0	0,48
76,1	55,0	161,0	147,0	1,17
88,9	64,0	184,0	170,0	1,67
108,0	79,0	223,0	206,0	2,60

Winkel 45° - R=1,5D
Short Elbow 45° - R=1,5D



AD / OD	A (mm)	L (mm)	kg
35,0	27,0	47,0	0,20
42,0	32,0	53,0	0,30
54,0	38,0	70,0	0,46
76,1	55,0	102,0	1,00
88,9	64,0	118,0	1,40
108,0	79,0	143,0	2,25

Winkel 45° mit einseitigen Einschiebende - R=1D
Short elbow 45° with one plain end - R=1D



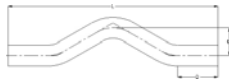
AD / OD	A (mm)	H (mm)	L (mm)	kg
35,0	27,0	53,0	47,0	0,20
42,0	32,0	60,0	53,0	0,29
54,0	38,0	78,0	70,0	0,44
76,1	55,0	116,0	102,0	0,97
88,9	64,0	132,0	118,0	1,36
108,0	79,0	161,0	143,0	2,20

Sprungbogen
Pre-formed pipebridge



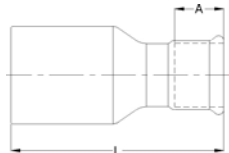
AD / OD	C (mm)	D (mm)	L (mm)	kg
15	31,0	54,0	155,0	0,08
18	34,0	59,5	167,0	0,10
22	37,0	64,5	177,0	0,14
28	43,0	75,0	215,0	0,20

Übergang
Crossover



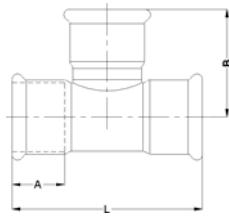
AD / OD	C (mm)	D (mm)	L (mm)	kg
15	31,0	47,0	202,0	0,11
18	34,0	48,0	215,0	0,14
22	37,0	48,0	225,0	0,20
28	43,0	65,0	280,0	0,29

Redu-Stück
Reducer



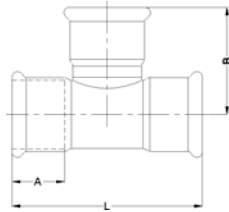
AD / OD	A (mm)	L (mm)	kg
18-15	20,0	64,0	0,04
22-15	20,0	74,0	0,04
22-18	21,0	70,0	0,05
28-15	20,0	81,0	0,06
28-18	21,0	67,0	0,06
28-22	22,0	77,0	0,06
35-22	22,0	85,0	0,09
35-28	24,0	84,0	0,09
42-22	22,0	106,0	0,12
42-28	24,0	97,0	0,13
42-35	27,0	103,0	0,11
54-28	24,0	117,0	0,18
54-35	27,0	116,0	0,20
54-42	32,0	115,0	0,28
76,1-42	32,0	155,0	0,45
76,1-54	38,0	155,0	0,45
88,9-54	38,0	167,0	0,60
88,9-76,1	55,0	180,0	0,70
108-54	38,0	195,0	0,85
108-76,1	55,0	202,0	1,02
108-88,9	64,0	202,0	1,00

T-Stück mit gleichen Abgängen
Equal tee



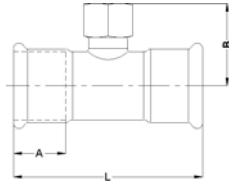
AD / OD	A (mm)	B (mm)	L (mm)	kg
15,0	20,0	38,0	66,0	0,06
18,0	21,0	41,0	68,0	0,08
22,0	22,0	44,0	80,0	0,11
28,0	24,0	50,0	88,0	0,15
35,0	27,0	57,0	105,0	0,20
42,0	32,0	67,0	116,0	0,26
54,0	38,0	78,0	142,0	0,43
76,1	55,0	117,0	242,0	1,30
88,9	64,0	127,0	255,0	1,60
108,0	79,0	155,0	310,0	2,50

T-Stück reduziert
Reducing tee



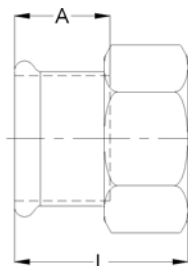
AD / OD	A (mm)	A1 (mm)	B (mm)	L (mm)	kg
18-15-18	21,0	20,0	40,0	68,0	0,08
22-15-22	22,0	20,0	42,0	80,0	0,10
22-18-22	22,0	21,0	43,0	80,0	0,10
28-15-28	24,0	20,0	45,0	88,0	0,10
28-18-28	24,0	21,0	46,0	88,0	0,13
28-22-28	24,0	22,0	47,0	88,0	0,14
35-15-35	27,0	20,0	48,0	105,0	0,17
35-18-35	27,0	21,0	49,0	105,0	0,17
35-22-35	27,0	22,0	50,0	105,0	0,18
35-28-35	27,0	24,0	53,0	105,0	0,19
42-22-42	32,0	22,0	53,0	116,0	0,23
42-28-42	32,0	24,0	56,0	116,0	0,23
42-35-42	32,0	27,0	61,0	116,0	0,25
54-18-54	38,0	21,0	58,0	142,0	0,34
54-22-54	38,0	22,0	59,0	142,0	0,34
54-28-54	38,0	24,0	62,0	142,0	0,36
54-35-54	38,0	27,0	66,0	142,0	0,36
54-42-54	38,0	32,0	73,0	142,0	0,39
76,1-22-76,1	55,0	22,0	70,0	242,0	1,00
76,1-28-76,1	55,0	24,0	73,0	242,0	1,00
76,1-35-76,1	55,0	27,0	77,0	242,0	1,10
76,1-42-76,1	55,0	32,0	84,0	242,0	1,10
76,1-54-76,1	55,0	38,0	89,0	242,0	1,01
88,9-22-88,9	64,0	22,0	77,0	255,0	1,25
88,9-28-88,9	64,0	24,0	80,0	255,0	1,25
88,9-35-88,9	64,0	27,0	84,0	255,0	1,30
88,9-42-88,9	64,0	32,0	91,0	255,0	1,30
88,9-54-88,9	64,0	38,0	95,0	255,0	1,30
88,9-76,1-88,9	64,0	55,0	123,0	255,0	1,55
108-22-108	79,0	22,0	86,0	310,0	1,85
108-28-108	79,0	24,0	89,0	310,0	1,98
108-35-108	79,0	27,0	93,0	310,0	1,87
108-42-108	79,0	32,0	100,0	310,0	1,89
108-54-108	79,0	38,0	105,0	310,0	2,00
108-76,1-108	79,0	55,0	133,0	310,0	2,02
108-88,9-108	79,0	64,0	138,0	310,0	2,15

T-Stück mit Abgang Innengewinde DIN EN 10226-1:2004 (alte DIN 2999)
Branch tee with female thread outlet DIN EN 10226-1:2004 (old DIN 2999)



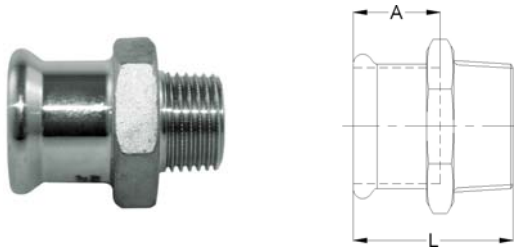
AD / OD	Rp	A (mm)	B (mm)	L (mm)	kg
15	1/2"	20,0	40,0	66,0	0,10
18	1/2"	21,0	42,0	68,0	0,10
22	1/2"	22,0	44,0	80,0	0,12
22	3/4"	22,0	47,0	80,0	0,16
28	1/2"	24,0	47,0	88,0	0,14
28	3/4"	24,0	50,0	88,0	0,18
35	1/2"	27,0	50,0	105,0	0,20
35	3/4"	27,0	53,0	105,0	0,22
42	1/2"	32,0	53,0	116,0	0,25
42	3/4"	32,0	56,0	116,0	0,27
54	1/2"	38,0	59,0	142,0	0,36
54	3/4"	38,0	62,0	142,0	0,40
54	2"	38,0	79,0	142,0	0,75
76,1	3/4"	55,0	73,0	242,0	1,00
88,9	3/4"	64,0	80,0	255,0	1,30
108	3/4"	79,0	89,0	310,0	1,90
76,1	2"	55,0	90,0	242,0	1,30
88,9	2"	64,0	96,5	255,0	1,60
108	2"	79,0	106,0	310,0	2,15

Übergangsmuffe; Pressmuffe / Innengewinde DIN EN 10226-1:2004 (alte DIN 2999)
Adaptor; pressfitting / female thread DIN EN 10226-1:2004 (old DIN 2999)



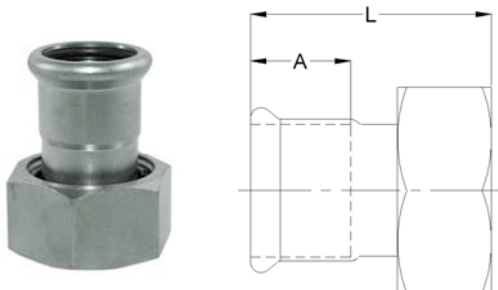
AD / OD	Rp	A (mm)	L (mm)	kg
15	1/2"	20,0	37,0	0,06
18	1/2"	21,0	37,0	0,06
22	1/2"	22,0	38,0	0,06
22	3/4"	22,0	39,0	0,08
28	1"	24,0	44,0	0,16
35	1 1/4"	27,0	49,0	0,23
42	1 1/2"	30,0	53,0	0,25
54	2"	35,0	69,0	0,54

Übergangsnippel; Pressmuffe / Aussengewinde DIN EN 10226-1:2004 (alte DIN 2999)
Male adaptor; pressfitting / male thread DIN EN 10226-1:2004 (old DIN 2999)



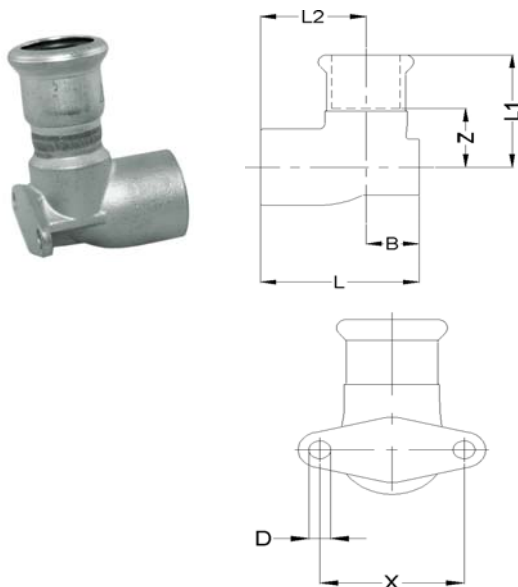
AD / OD	R	A (mm)	L (mm)	kg
15	1/2"	20,0	42,0	0,05
18	1/2"	21,0	42,0	0,06
18	3/4"	20,0	43,0	0,06
22	1/2"	22,0	42,0	0,08
22	3/4"	22,0	44,0	0,08
28	1"	24,0	48,0	0,13
35	1 1/4"	27,0	51,0	0,16
42	1 1/2"	32,0	57,0	0,26
54	2"	38,0	68,0	0,38

Übergangsmuffe mit Drehmutter; Innengewinde DIN EN 10226-1:2004 (alte DIN 2999)
Union; female thread DIN EN 10226-1:2004 (old DIN 2999)



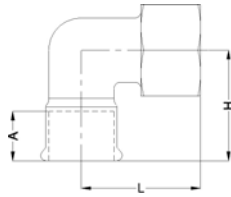
AD / OD	Rp	A (mm)	L (mm)	kg
15	3/4"	20,0	57,0	0,12
18	3/4"	21,0	57,0	0,12
22	1"	22,0	60,0	0,16
28	1 1/4"	24,0	65,0	0,25
35	1 1/2"	27,0	70,0	0,30
42	2"	32,0	77,0	0,31
54	2"	38,0	97,0	0,45

Deckenwinkel 90° mit Innengewinde DIN EN 10226-1:2004 (alte DIN 2999)
90° female elbow with wall flange; female thread DIN EN 10226-1:2004 (old DIN 2999)



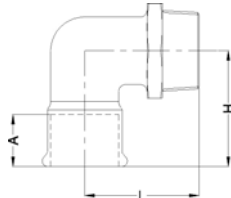
AD / OD	Rp	D(mm)	L(mm)	L1(mm)	L2(mm)	X(mm)	Z(mm)
18	1/2"	5,0	45,0	50,0	32,0	34,0	28,0
15	1/2"	5,0	45,0	52,0	32,0	34,0	30,0
22	3/4"	6,0	55,0	57,0	38,0	40,0	33,0

Übergangswinkel; Pressmuffe / Innengewinde DIN EN 10226-1:2004 (alte DIN 2999)
90° angle adapter; pressfitting / female thread DIN EN 10226-1:2004 (old DIN 2999)



AD / OD	Rp	A (mm)	H (mm)	L (mm)	kg
15	1/2"	20,0	36,0	36,0	0,09
18	1/2"	21,0	57,0	37,5	0,10
22	3/4"	21,0	60,0	42,0	0,16
28	1"	24,0	67,0	48,0	0,28
35	1 1/4"	27,0	75,0	64,0	0,40

Übergangswinkel ; Pressmuffe / Aussengewinde DIN EN 10226-1:2004 (alte DIN 2999)
90° angle adapter; pressfitting / male thread DIN EN 10226-1:2004 (old DIN 2999)



AD / OD	R	A (mm)	H (mm)	L (mm)	kg
15	1/2"	20,0	56,0	36,0	0,09
18	1/2"	21,0	57,0	37,5	0,10
22	3/4"	21,0	60,0	42,0	0,15
28	1"	24,0	67,0	48,0	0,25
35	1 1/4"	27,0	75,0	64,0	0,39
42	1 1/2"	32,0	86,0	67,0	0,48
54	2"	38,0	97,0	78,0	0,75