

B Gewindefittings Threaded fittings

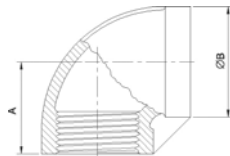
Gewinde DIN EN 10226-1:2004 (alte DIN 2999). Außengewinde sind konisch (R) und Innengewinde zylindrisch (Rp). Bauformen ähnlich DIN EN 10241:2000.

Werkstoff AISI 1.4401; 1.4404; 1.4571

Thread DIN EN 10226-1:2004 (old DIN 2999). Male threads are conical (R) and female threads are cylindrical (Rp) . Construction dimensions similar to DIN EN 10241:2000.

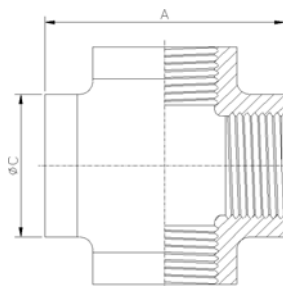
Material AISI 316; 316L; 316Ti

Typ 301 Winkel 90° Innen / Innen (alte DIN 2987) Elbows 90°; f/f (old DIN 2987)



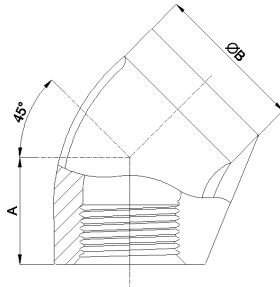
Rp	A (mm)	B (mm)
1/8"	17,0	16,0
1/4"	19,0	19,0
3/8"	21,5	22,5
1/2"	27,0	29,0
3/4"	30,0	34,0
1"	35,0	42,0
1 1/4"	43,0	50,0
1 1/2"	45,0	57,0
2"	54,0	70,0
2 1/2"	64,0	88,0
3"	72,0	101,0
4"	96,0	128,0

Typ 302 Kreuzstück (alte DIN 2987) Cross (old DIN 2987)



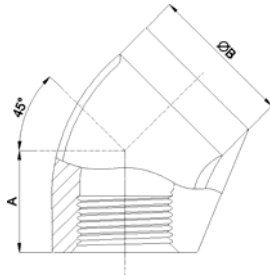
Rp	A (mm)	C (mm)
1/8"	35,0	16,0
1/4"	39,0	19,0
3/8"	44,0	22,2
1/2"	55,0	28,0
3/4"	63,0	33,5
1"	73,0	42,0
1 1/4"	85,0	50,0
1 1/2"	90,0	57,0
2"	108,0	70,0
2 1/2"	132,0	90,0
3"	156,0	109,0
4"	190,0	125,0

Typ 303 Winkel 45° Innen / Innen (alte DIN 2987)
Elbow 45°; f/f (old DIN 2987)



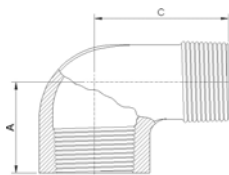
Rp	A (mm)	B (mm)
1/8"	15,00	15,0
1/4"	16,00	19,0
3/8"	18,00	22,5
1/2"	20,00	29,0
3/4"	24,00	34,0
1"	27,00	42,0
1 1/4"	31,00	50,6
1 1/2"	34,00	57,5
2"	39,00	71,0
2 1/2"	46,00	90,0
3"	52,00	101,0
4"	63,00	128,0

Typ 303IA Winkel 45° Innen / Aussen (alte DIN 2987)
Elbow 45°; m/f (old DIN 2987)



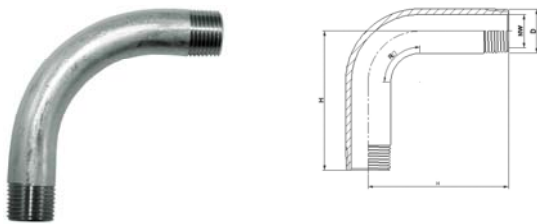
R/Rp	A (mm)	B (mm)	C (mm)
1/4"	17,0	16,5	18,1
3/8"	19,5	18,5	21,5
1/2"	20,5	21,0	27,5
3/4"	23,5	24,5	34,0
1"	27,5	27,5	42,5
1 1/4"	30,0	33,0	50,5
1 1/2"	29,5	36,5	58,5
2"	33,0	40,5	72,0

Typ 304 Winkel 90° Innen / Aussen (alte DIN 2987)
Street Elbow 90°; m/f (old DIN 2987)



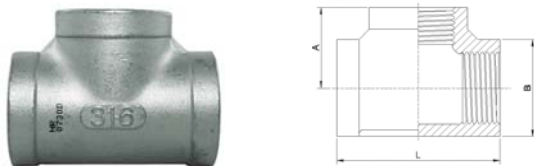
R/Rp	A (mm)	B (mm)	C (mm)
1/8"	19,0	15,0	26,5
1/4"	21,5	18,2	30,8
3/8"	24,5	22,5	36,5
1/2"	29,0	28,0	41,0
3/4"	33,5	33,5	48,0
1"	37,0	42,0	55,0
1 1/4"	43,0	52,0	62,0
1 1/2"	47,0	59,0	67,0
2"	57,5	72,0	77,5
2 1/2"	66,0	87,0	93,0
3"	74,0	101,0	107,0
4"	90,0	128,0	130,0

Typ 305 Bogen 90° aus Rohr a/a (alte DIN 2983)
bend 90°; m/m (alte DIN 2983)



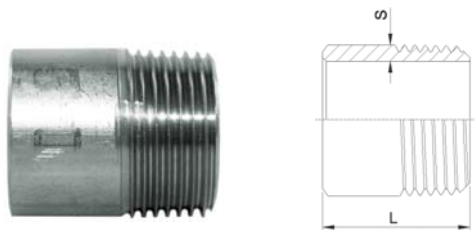
R	DN	H (mm)	D (mm)
1/8"	6	50,0	10,2
1/4"	8	60,0	13,5
3/8"	10	70,0	17,2
1/2"	15	80,0	21,3
3/4"	20	100,0	26,9
1"	25	120,0	33,7
1 1/4"	32	140,0	42,4
1 1/2"	40	160,0	48,3
2"	50	190,0	60,3

Typ 307 T-Stück (alte DIN 2987)
Equal tee (old DIN 2987)



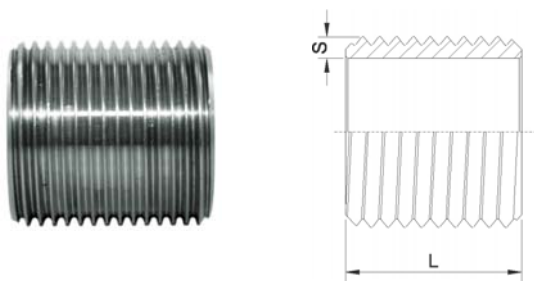
Rp	A (mm)	B (mm)	L (mm)
1/8"	17,0	16,0	34,0
1/4"	19,6	18,8	39,0
3/8"	23,5	22,5	46,0
1/2"	27,5	29,0	55,0
3/4"	32,0	34,0	62,0
1"	36,0	41,5	72,0
1 1/4"	43,0	50,0	86,0
1 1/2"	45,0	57,0	90,0
2"	54,0	70,0	108,0
2 1/2"	64,0	88,0	128,0
3"	72,0	101,0	143,0
4"	96,0	130,0	192,0

Typ 308 Anschweissnippel (alte DIN 2982)
Welding nipple (old DIN 2982)



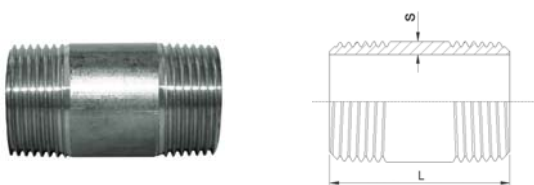
R	DN	s (mm)	L (mm)	Bis / up to
1/8"	6	2,0	30,0	6000 mm
1/4"	8	2,3	30,0	6000 mm
3/8"	10	2,3	30,0	6000 mm
1/2"	15	2,6	35,0	6000 mm
3/4"	20	2,6	40,0	6000 mm
1"	25	3,2	40,0	6000 mm
1 1/4"	32	3,2	50,0	6000 mm
1 1/2"	40	3,2	50,0	6000 mm
2"	50	3,6	50,0	6000 mm
2 1/2"	65	3,6	60,0	auf Anfrage / on request
3"	80	4,0	70,0	auf Anfrage / on request
4"	100	4,5	80,0	auf Anfrage / on request
5"	125	5,0	90,0	auf Anfrage / on request
6"	150	7,1	120,0	auf Anfrage / on request

Typ 309 **Rohrnippel (alte DIN 2982)**
Parallel nipple (old DIN 2982)



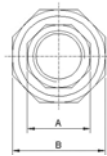
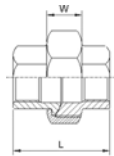
G	DN	L (mm)	Bis / up to
1/8"	6	16,0	auf Anfrage / on request
1/4"	8	18,0	auf Anfrage / on request
3/8"	10	22,0	auf Anfrage / on request
1/2"	15	25,0	auf Anfrage / on request
3/4"	20	30,0	auf Anfrage / on request
1"	25	35,0	auf Anfrage / on request
1 1/4"	32	38,0	auf Anfrage / on request
1 1/2"	40	38,0	auf Anfrage / on request
2"	50	45,0	auf Anfrage / on request
2 1/2"	65	55,0	auf Anfrage / on request
3"	80	60,0	auf Anfrage / on request
4"	100	70,0	auf Anfrage / on request
5"	125	85,0	auf Anfrage / on request
6"	150	100,0	auf Anfrage / on request

Typ 310 **Rohrdoppelnippel (alte DIN 2982)**
Barrel nipple (old DIN 2982)



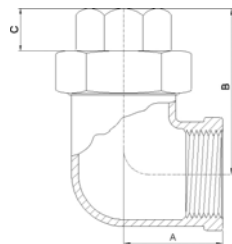
R	DN	s (mm)	L (mm)	Bis / up to
1/8"	6	2,0	40,0	6000 mm
1/4"	8	2,3	40,0	6000 mm
3/8"	10	2,3	40,0	6000 mm
1/2"	15	2,6	60,0	6000 mm
3/4"	20	2,6	60,0	6000 mm
1"	25	3,2	60,0	6000 mm
1 1/4"	32	3,2	80,0	6000 mm
1 1/2"	40	3,2	80,0	6000 mm
2"	50	3,6	100,0	6000 mm
2 1/2"	65	3,6	100,0	auf Anfrage / on request
3"	80	4,0	120,0	auf Anfrage / on request
4"	100	4,5	120,0	auf Anfrage / on request
5"	125	5,0	150,0	auf Anfrage / on request
6"	150	7,1	150,0	auf Anfrage / on request

Typ 311 Verschraubung beidseitig Innengewinde; flach dichtend
Union; flat; F / F



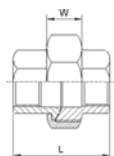
Rp	L (mm)	A (mm)	B (mm)	W (mm)
1/8"	34,0	17,3	28,0	12,0
1/4"	34,0	17,3	28,0	12,0
3/8"	38,0	21,5	34,5	14,0
1/2"	40,5	26,5	39,0	15,0
3/4"	45,0	31,0	45,8	15,0
1"	51,0	38,0	55,0	17,0
1 1/4"	58,0	47,0	63,2	20,0
1 1/2"	59,0	53,0	71,0	20,0
2"	64,0	66,1	86,0	22,0
2 1/2"	71,0	83,0	106,0	24,0
3"	84,0	97,0	124,0	28,0
4"	97,0	123,0	154,0	33,0

Typ 311W Winkelverschraubung beidseitig Innengewinde; flach dichtend
Elbow union; flat; F / F



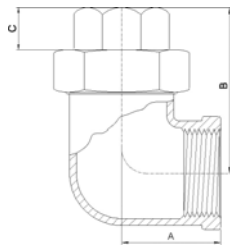
Rp	A (mm)	B (mm)	C (mm)
1/4"	25,0	40,0	11,0
3/8"	27,0	44,5	11,5
1/2"	27,0	52,3	12,5
3/4"	33,3	54,5	15,0
1"	39,7	66,0	17,0
1 1/4"	47,5	73,0	19,0
1 1/2"	51,5	77,5	19,5
2"	62,0	87,0	21,0

Typ 312 Verschraubung beidseitig Innengewinde; konisch dichtend
Union; conical; F / F



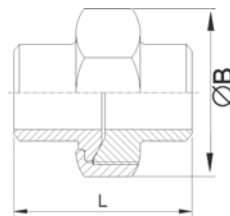
Rp	L (mm)	A (mm)	B (mm)	W (mm)
1/8"	34,0	17,3	28,0	12,0
1/4"	34,0	17,3	28,0	12,0
3/8"	38,0	21,5	34,5	14,0
1/2"	40,5	26,5	39,0	15,0
3/4"	45,0	31,0	45,8	15,0
1"	51,0	38,0	55,0	17,0
1 1/4"	58,0	47,0	63,2	20,0
1 1/2"	59,0	53,0	71,0	20,0
2"	64,0	66,1	86,0	22,0
2 1/2"	71,0	83,0	106,0	24,0
3"	84,0	97,0	124,0	28,0
4"	97,0	123,0	154,0	33,0

Typ 312W Winkelverschraubung beidseitig Innengewinde; konisch dichtend
Elbow union; conical; F / F



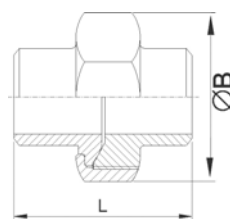
Rp	A (mm)	B (mm)	C (mm)
1/4"	25,0	40,0	11,0
3/8"	27,0	44,5	11,5
1/2"	27,0	52,3	12,5
3/4"	33,3	54,5	15,0
1"	39,7	66,0	17,0
1 1/4"	47,5	73,0	19,0
1 1/2"	51,5	77,5	19,5
2"	62,0	87,0	21,0

Typ 313 Vorschweisverschraubung; konisch dichtend
Union; conical; BW/BW



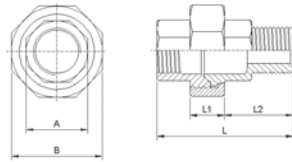
R	DN	L (mm)	B (mm)
1/4"	8	34,0	28,0
3/8"	10	38,0	34,5
1/2"	15	40,0	39,0
3/4"	20	47,5	46,0
1"	25	49,5	55,0
1 1/4"	32	54,0	63,2
1 1/2"	40	56,0	71,0
2"	50	59,0	86,0
2 1/2"	65	69,5	106,0
3"	80	81,5	124,0
4"	100	115,0	155,0

Typ 314 Vorschweisverschraubung; flach dichtend
Union; flat; BW/BW



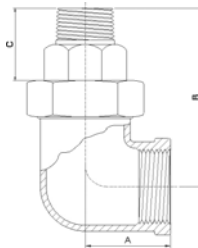
R	DN	L (mm)	B (mm)
1/4"	8	34,0	28,0
3/8"	10	38,0	34,5
1/2"	15	40,0	39,0
3/4"	20	47,5	46,0
1"	25	49,5	55,0
1 1/4"	32	54,0	63,2
1 1/2"	40	56,0	71,0
2"	50	59,0	86,0
2 1/2"	65	69,5	106,0
3"	80	81,5	124,0
4"	100	115,0	155,0

Typ 315 Verschraubung Innen-/ Aussengewinde; konisch dichtend;
Union; conical; M / F



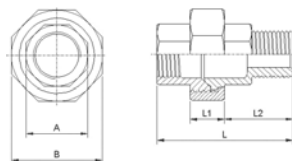
R/Rp	B (mm)	L (mm)	L1 (mm)	L2 (mm)
1/4"	28,0	45,0	12,0	21,0
3/8"	34,5	53,0	14,5	26,0
1/2"	39,0	53,0	15,0	26,0
3/4"	46,0	60,0	15,0	29,0
1"	55,0	66,0	17,0	32,0
1 1/4"	63,2	74,0	20,0	34,5
1 1/2"	71,0	74,0	20,0	34,5
2"	86,0	83,0	22,0	39,0
2 1/2"	106,0	92,0	24,0	43,0
3"	124,0	104,0	28,0	48,0
4"	154,0	114,0	33,0	49,5

Typ 315W Winkelverschraubung Innen-/ Aussengewinde; konisch dichtend
Elbow union; conical; M / F



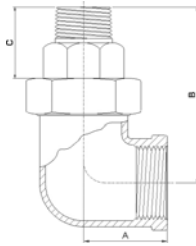
R/Rp	A (mm)	B (mm)	C (mm)
1/4"	25,0	51,5	22,0
3/8"	27,0	60,3	26,0
1/2"	27,0	66,0	25,5
3/4"	33,3	68,5	29,0
1"	39,7	81,0	31,0
1 1/4"	47,5	88,0	34,0
1 1/2"	51,5	92,0	34,0
2"	62,0	105,0	39,0

Typ 316 Verschraubung Innen-/ Aussengewinde; flach dichtend
Union; flat; M / F



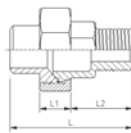
R/Rp	B (mm)	L (mm)	L1 (mm)	L2 (mm)
1/4"	28,0	45,0	12,0	21,0
3/8"	34,5	53,0	14,5	26,0
1/2"	39,0	53,0	15,0	26,0
3/4"	46,0	60,0	15,0	29,0
1"	55,0	66,0	17,0	32,0
1 1/4"	63,2	74,0	20,0	34,5
1 1/2"	71,0	74,0	20,0	34,5
2"	86,0	83,0	22,0	39,0
2 1/2"	106,0	92,0	24,0	43,0
3"	124,0	104,0	28,0	48,0
4"	154,0	114,0	33,0	49,5

Typ 316W Winkelverschraubung Innen-/ Aussengewinde; flach dichtend
Elbow union; flat; M / F



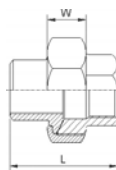
R/Rp	A (mm)	B (mm)	C (mm)
1/4"	25,0	51,5	22,0
3/8"	27,0	60,3	26,0
1/2"	27,0	66,0	25,5
3/4"	33,3	68,5	29,0
1"	39,7	81,0	31,0
1-1/4"	47,5	88,0	34,0
1-1/2"	51,5	92,0	34,0
2"	62,0	105,0	39,0

Typ 317 Verschraubung Schweissende / Aussengewinde; flach dichtend
Union; flat; BW / M



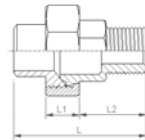
R	A (mm)	B (mm)	L (mm)	L1 (mm)	L2 (mm)
1/4"	17,3	28,0	45,0	12,0	21,0
3/8"	21,5	34,5	53,0	14,5	26,0
1/2"	26,5	39,0	53,0	15,0	26,0
3/4"	31,0	46,0	60,0	15,0	29,0
1"	38,0	55,0	66,0	17,0	32,0
1 1/4"	47,0	63,2	74,0	20,0	34,5
1 1/2"	53,0	71,0	74,0	20,0	34,5
2"	66,8	86,0	83,0	22,0	39,0
2 1/2"	83,0	106,0	92,0	24,0	43,0
3"	97,0	124,0	104,0	28,0	48,0

Typ 318 Verschraubung Schweissende / Innengewinde; flach dichtend
Union; flat; BW / F



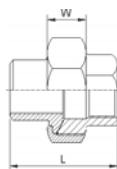
Rp	L (mm)	A (mm)	B	W (mm)
1/4"	34,0	17,3	28,0	12,0
3/8"	38,0	21,5	34,5	14,0
1/2"	40,5	26,5	39,0	15,0
3/4"	45,0	31,0	45,8	15,0
1"	51,0	38,0	55,0	17,0
1 1/4"	58,0	47,0	63,2	20,0
1 1/2"	59,0	53,0	71,0	20,0
2"	64,0	66,8	86,0	22,0
2 1/2"	71,0	83,0	106,0	24,0
3"	84,0	97,0	124,0	28,0

Typ 319 Verschraubung Schweissende / Aussengewinde; konisch dichtend
Union; conical; BW / M



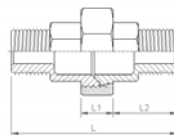
R	A (mm)	B (mm)	L (mm)	L1 (mm)	L2 (mm)
1/4"	17,3	28,0	45,0	12,0	21,0
3/8"	21,5	34,5	53,0	14,5	26,0
1/2"	26,5	39,0	53,0	15,0	26,0
3/4"	31,0	46,0	60,0	15,0	29,0
1"	38,0	55,0	66,0	17,0	32,0
1 1/4"	47,0	63,2	74,0	20,0	34,5
1 1/2"	53,0	71,0	74,0	20,0	34,5
2"	66,8	86,0	83,0	22,0	39,0
2 1/2"	83,0	106,0	92,0	24,0	43,0
3"	97,0	124,0	104,0	28,0	48,0

Typ 320 Verschraubung Schweissende / Innengewinde; konisch dichtend
Union; conical; BW / F



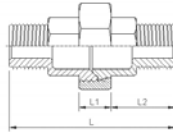
Rp	L (mm)	A (mm)	B (mm)	W (mm)
1/4"	34,0	17,3	28,0	12,0
3/8"	38,0	21,5	34,5	14,0
1/2"	40,5	26,5	39,0	15,0
3/4"	45,0	31,0	45,8	15,0
1"	51,0	38,0	55,0	17,0
1	58,0	47,0	63,2	20,0
1	59,0	53,0	71,0	20,0
2"	64,0	66,8	86,0	22,0
2	71,0	83,0	106,0	24,0
3"	84,0	97,0	124,0	28,0

Typ 321 Verschraubung beidseitig Aussengewinde; flach dichtend
Union; flat; M / M



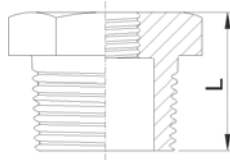
R	A (mm)	B (mm)	L (mm)	L1 (mm)	L2 (mm)
1/4"	17,3	28,0	54,0	12,0	21,0
3/8"	21,5	34,5	66,0	14,0	26,0
1/2"	26,5	39,0	67,0	15,0	26,0
3/4"	31,0	45,7	73,0	15,0	29,0
1"	38,0	55,0	81,0	17,0	32,0
1 1/4"	47,0	63,2	89,0	20,0	34,5
1 1/2"	53,0	71,0	89,0	20,0	34,5
2"	66,8	86,0	100,0	22,0	39,0
2 1/2"	83,5	106,0	110,0	24,0	43,0
3"	97,0	124,0	124,0	28,0	48,0

Typ 322 Verschraubung beidseitig Aussengewinde; konisch dichtend
Union; conical; M / M



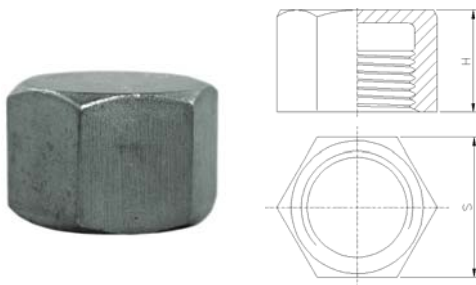
R	A (mm)	B (mm)	L (mm)	L1 (mm)	L2 (mm)
1/4"	17,3	28,0	54,0	12,0	21,0
3/8"	21,5	34,5	66,0	14,0	26,0
1/2"	26,5	39,0	67,0	15,0	26,0
3/4"	31,0	45,7	73,0	15,0	29,0
1"	38,0	55,0	81,0	17,0	32,0
1 1/4"	47,0	63,2	89,0	20,0	34,5
1 1/2"	53,0	71,0	89,0	20,0	34,5
2"	66,8	86,0	100,0	22,0	39,0
2 1/2"	83,5	106,0	110,0	24,0	43,0
3"	97,0	124,0	124,0	28,0	48,0

Typ 325 Reduzierstück (alte DIN 2990)
Hexagon bushing (old DIN 2990)



R	Rp	L (mm)	SW	R	Rp	L (mm)	SW
1/4"	1/8"	17,0	17,0	1 1/2"	3/4"	30,5	50,0
3/8"	1/8"	17,5	21,0	1 1/2"	1"	30,5	50,0
3/8"	1/4"	17,5	21,0	1 1/2"	1 1/4"	30,5	50,0
1/2"	1/8"	22,0	25,0	2"	1/2"	33,5	62,0
1/2"	1/4"	22,0	25,0	2"	3/4"	33,5	62,0
1/2"	3/8"	22,0	25,0	2"	1"	33,5	62,0
3/4"	1/8"	23,0	30,0	2"	1 1/4"	33,5	62,0
3/4"	1/4"	23,0	30,0	2"	1 1/2"	33,5	62,0
3/4"	3/8"	23,0	30,0	2 1/2"	1"	40,0	80,0
3/4"	1/2"	23,0	30,0	2 1/2"	1 1/4"	40,0	80,0
1"	1/8"	27,5	37,0	2 1/2"	1 1/2"	40,0	80,0
1"	1/4"	27,5	37,0	2 1/2"	2"	40,0	80,0
1"	3/8"	27,5	37,0	3"	1 1/4"	41,0	92,0
1"	1/2"	27,5	37,0	3"	1 1/2"	41,0	92,0
1"	3/4"	27,5	37,0	3"	2"	41,0	92,0
1 1/4"	3/8"	30,0	46,0	3"	2 1/2"	41,0	92,0
1 1/4"	1/2"	30,0	46,0	4"	1 1/2"	45,0	118,0
1 1/4"	3/4"	30,0	46,0	4"	2"	45,0	118,0
1 1/4"	1"	30,0	46,0	4"	2 1/2"	45,0	118,0
1 1/2"	1/2"	30,5	50,0	4"	3"	45,0	118,0

Typ 326 Sechskantkappe (alte DIN 2991)
Hexagon cap (old DIN 2991)



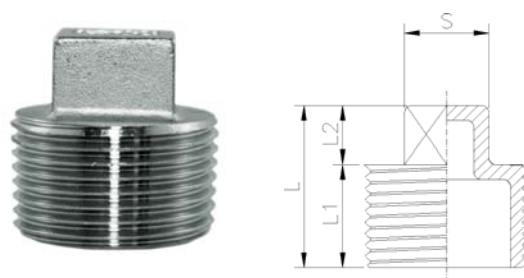
Rp	S (mm)	H (mm)
1/8"	14,0	15,5
1/4"	17,5	17,0
3/8"	21,0	17,0
1/2"	26,0	21,0
3/4"	31,0	21,0
1"	38,5	28,0
1 1/4"	47,0	31,5
1 1/2"	54,0	31,5
2"	66,0	35,0
2 1/2"	83,0	38,0
3"	96,0	38,0
4"	123,0	41,0

Typ 327 Sechskantmutter (alte DIN 431)
Hexagon nut (old DIN 431)



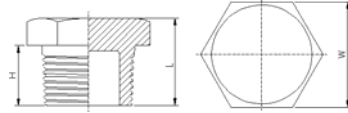
G	L (mm)	S (mm)
1/8"	6,5	16,0
1/4"	7,0	18,0
3/8"	7,0	24,0
1/2"	8,0	30,0
3/4"	9,0	34,5
1"	9,0	43,0
1 1/4"	11,0	52,0
1 1/2"	12,0	58,0
2"	13,0	72,0
2 1/2"	15,0	89,0
3"	17,0	102,0
4"	18,0	128,0

Typ 329 Vierkantstopfen (alte DIN 2991)
Square plug (old DIN 2991)



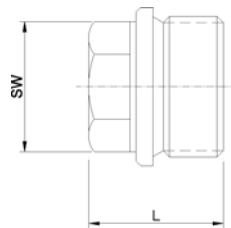
R	S (mm)	L (mm)	L1 (mm)	L2 (mm)
1/8"	7,0	20,0	12,0	8,0
1/4"	8,0	20,0	12,0	8,0
3/8"	10,0	20,0	12,0	8,0
1/2"	13,0	25,0	15,0	10,0
3/4"	16,0	26,5	15,5	11,0
1"	19,0	33,0	20,0	13,0
1 1/4"	22,0	35,0	20,0	15,0
1 1/2"	25,0	35,0	20,0	15,0
2"	29,0	40,0	23,0	17,0
2 1/2"	39,0	47,0	27,0	20,0
3"	44,0	47,0	27,0	20,0
4"	58,0	53,0	31,0	22,0

Typ 330 Sechskantstopfen
Hexagon plug



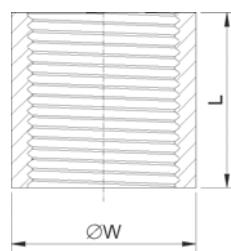
R	H (mm)	L (mm)	W (mm)
1/8"	10,0	16,0	13,0
1/4"	12,0	17,5	16,5
3/8"	13,5	19,5	19,5
1/2"	16,0	22,0	25,0
3/4"	16,5	23,5	30,0
1"	19,0	27,0	37,2
1 1/4"	21,5	31,0	46,0
1 1/2"	22,0	31,5	51,5
2"	23,0	34,0	63,5
2 1/2"	29,5	41,0	80,0
3"	30,0	42,0	92,5
4"	30,0	45,0	120,0

Typ 331 Verschlusschraube DIN 910 mit zylindrischem Gewinde
Hexagon plug with parallel thread acc. to DIN 910



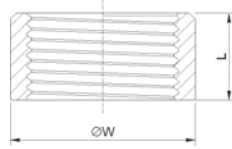
G	L (mm)	SW (mm)
1/8"	17,0	10,0
1/4"	17,0	13,0
3/8"	17,0	17,0
1/2"	22,0	19,0
3/4"	26,0	24,0
1"	32,0	27,0
1 1/4"	33,0	30,0
1 1/2"	33,0	34,0
2"	40,0	36,0

Typ 333 Muffe (alte DIN 2986)
Socket (old DIN 2986)



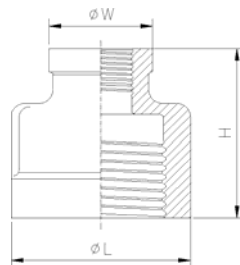
Rp	W (mm)	L (mm)
1/8"	14,0	17,0
1/4"	18,5	25,0
3/8"	21,3	26,0
1/2"	26,4	34,0
3/4"	31,8	36,0
1"	39,5	43,0
1 1/4"	48,3	48,0
1 1/2"	54,5	48,0
2"	66,3	56,0
2 1/2"	82,0	65,0
3"	95,0	71,0
4"	122,0	83,0
5"	147,0	92,0
6"	174,0	92,0

Typ 334 Halbe Muffe (alte DIN 2986)
Half socket (old DIN 2986)



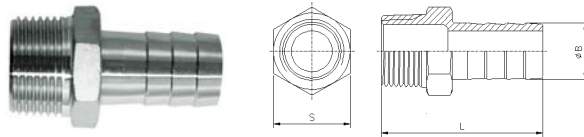
Rp	W (mm)	L (mm)
1/8"	14,0	7,5
1/4"	18,5	11,0
3/8"	21,3	11,5
1/2"	26,4	15,0
3/4"	31,8	16,5
1"	39,5	19,0
1 1/4"	48,3	21,5
1 1/2"	54,5	21,5
2"	66,3	26,0
2 1/2"	82,0	30,0
3"	95,0	33,0
4"	122,0	39,0
5"	147,0	44,0
6"	174,0	44,0

Typ 335 Reduziermuffe (alte DIN 2988)
Reducing socket (old DIN 2988)



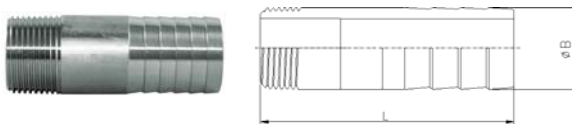
Rp	Rp	L (mm)	H (mm)	W (mm)
1/4"	1/8"	18,0	24,0	18,3
3/8"	1/8"	22,0	29,0	18,3
3/8"	1/4"	22,0	29,0	18,3
1/2"	1/8"	28,0	34,0	19,5
1/2"	1/4"	28,0	34,0	19,5
1/2"	3/8"	28,0	34,0	23,0
3/4"	1/8"	34,0	36,0	28,0
3/4"	1/4"	34,0	36,0	28,0
3/4"	3/8"	34,0	36,0	28,0
3/4"	1/2"	34,0	36,0	28,0
1"	3/8"	42,0	41,0	28,0
1"	1/2"	42,0	41,0	28,0
1"	3/4"	42,0	41,0	34,0
1 1/4"	1/2"	50,0	46,0	34,0
1 1/4"	3/4"	50,0	46,0	34,0
1 1/4"	1"	50,0	47,0	41,5
1 1/2"	1/2"	57,0	47,0	41,5
1 1/2"	3/4"	57,0	47,5	41,5
1 1/2"	1"	57,0	49,0	41,5
1 1/2"	1 1/4"	57,0	51,0	50,0
2"	1/2"	70,0	55,0	41,5
2"	3/4"	70,0	55,0	41,5
2"	1"	70,0	55,0	41,5
2"	1 1/4"	70,0	59,0	41,5
2"	1 1/2"	70,0	59,0	57,0
2 1/2"	1 1/4"	88,0	58,7	50,5
2 1/2"	1 1/2"	88,0	61,0	57,0
2 1/2"	2"	88,0	61,0	70,0
3"	2"	102,5	65,5	73,0
3"	2 1/2"	102,5	72,0	90,0
4"	2"	129,0	85,0	73,0
4"	2 1/2"	129,0	85,0	90,0
4"	3"	129,0	85,0	99,0

**Typ 337 Schlauchtülle mit Sechskant
Hose nipple**



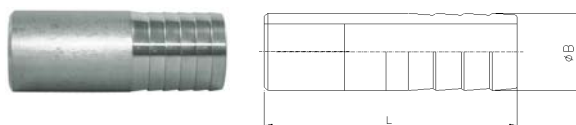
R	B (mm)	L (mm)	S (mm)
1/8"	7,0	45,0	12,5
1/4"	8,0	46,0	15,0
3/8"	10,0	53,0	19,0
1/2"	13,0	56,0	23,0
3/4"	19,0	60,0	29,0
1"	25,0	69,0	35,0
1 1/4"	32,0	70,0	45,0
1 1/2"	40,0	80,0	51,0
2"	51,50	88,0	62,0
2 1/2"	63,5	100,0	79,0
3"	76,5	110,0	91,5
4"	101,0	120,0	117,0

**Typ 337G Schlauchnippel aus Rohr gefertigt mit Aussengewinde
Hose nipple manufactured out of tube with male thread**



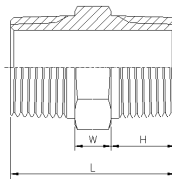
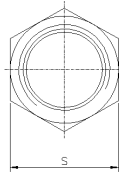
R	B (mm)	L (mm)
1/4"	13,5	70,0
3/8"	17,2	70,0
1/2"	21,3	70,0
3/4"	26,9	70,0
1"	33,7	70,0
1 1/4"	42,4	70,0
1 1/2"	48,3	100,0
2"	60,3	100,0
2 1/2"	76,1	100,0
3"	88,9	100,0

**Typ 337S Schlauchnippel aus Rohr gefertigt mit Anschweissende
Hose nipple manufactured out of tube with welding end**



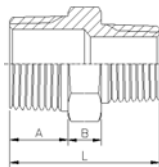
R	B (mm)	L (mm)
1/4"	13,5	70,0
3/8"	17,2	70,0
1/2"	21,3	70,0
3/4"	26,9	70,0
1"	33,7	70,0
1 1/4"	42,4	70,0
1 1/2"	48,3	100,0
2"	60,3	100,0
2 1/2"	76,1	100,0
3"	88,9	100,0

Typ 340 Sechskantdoppelnippel (alte DIN 2990)
Hexagon nipple (old DIN 2990)



R	H(mm)	L (mm)	S (mm)	W (mm)
1/8"	12,0	30,0	13,0	6,0
1/4"	13,0	32,0	15,0	6,0
3/8"	13,0	33,0	18,5	6,0
1/2"	16,0	41,0	22,5	8,0
3/4"	17,5	43,5	29,0	8,5
1"	19,5	49,0	35,0	9,0
1 1/4"	21,0	52,0	45,0	10,0
1 1/2"	21,0	52,0	50,0	10,0
2"	23,0	57,0	62,0	11,0
2 1/2"	25,0	63,0	78,0	13,0
3"	28,0	69,0	91,0	13,0
4"	30,0	75,0	118,0	15,0

Typ 341 Reduziernippel (alte DIN 2990)
Hexagon reducing nipple (old DIN 2990)



R	R	W	L (mm)	R	R	L (mm)	H (mm)
1/4"	1/8"	15,5	31,0	1 1/2"	3/4"	51,0	49,0
3/8"	1/8"	19,7	33,0	1 1/2"	1"	51,0	55,0
3/8"	1/4"	19,7	34,5	1 1/2"	1 1/4"	51,0	55,0
1/2"	1/8"	23,0	36,5	2"	1/4"	63,0	52,0
1/2"	1/4"	23,0	36,5	2"	3/8"	63,0	52,0
1/2"	3/8"	23,0	36,5	2"	1/2"	63,0	52,0
3/4"	1/8"	28,7	41,0	2"	3/4"	63,0	54,0
3/4"	1/4"	28,7	41,0	2"	1"	63,0	54,0
3/4"	3/8"	28,7	41,0	2"	1 1/4"	63,0	56,0
3/4"	1/2"	28,7	41,0	2"	1 1/2"	63,0	56,0
1"	1/4"	36,0	42,0	2 1/2"	1"	77,0	66,0
1"	3/8"	36,0	42,0	2 1/2"	1 1/4"	77,0	66,0
1"	1/2"	36,0	42,0	2 1/2"	1 1/2"	77,0	66,0
1"	3/4"	36,0	42,0	2 1/2"	2"	77,0	66,0
1 1/4"	1/4"	45,5	47,0	3"	1 1/4"	95,5	74,5
1 1/4"	3/8"	45,5	47,0	3"	1 1/2"	95,5	74,5
1 1/4"	1/2"	45,5	49,0	3"	2"	95,5	74,5
1 1/4"	3/4"	45,5	49,0	3"	2 1/2"	95,5	74,5
1 1/4"	1"	45,5	52,5	4"	2"	125,0	82,0
1 1/2"	1/4"	51,0	47,0	4"	2 1/2"	125,0	82,0
1 1/2"	3/8"	51,0	47,0	4"	3"	125,0	82,0
1 1/2"	1/2"	51,0	49,0				